



Cissbury Ring South, Woodside Park, N12 7BG

Asking Price £1,250,000 Freehold

Council Tax Band F

REAL ESTATES
Est. 1981

Estate Agents · Residential Sales · Investments · Lettings

An opportunity to acquire this beautifully presented 4 BEDROOM, 2 BATHROOM (1 EN SUITE) semi-detached family home, with the benefit of an extension to the ground floor rear and loft, as well as a detached GARAGE.

Situated in a sought after cul-de-sac in the heart of Woodside Park, within walking distance to local shops, cafes, parkland, bus services and both Woodside Park and West Finchley Northern Line tube stations. Also within the catchment area for Frith Manor Primary School.

Arranged over 3 floors, the accommodation comprises front aspect reception room, open plan kitchen/diner/family room with access to the rear garden, utility room and guest cloakroom to the ground floor. The 1st floor offers 3 bedrooms and a family bathroom/wc. A master bedroom with en suite bathroom on the 2nd floor completes the accommodation.

Sole Agent Real Estates





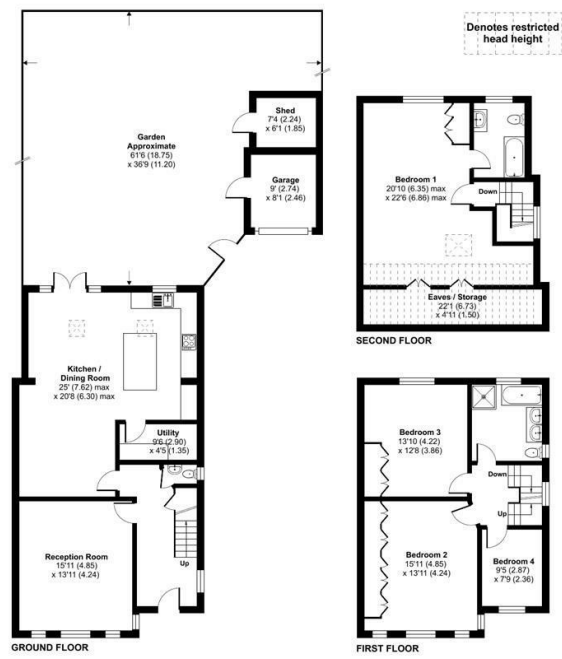


Cissbury Ring South, London, N12

Approximate Area = 1977 sq ft / 184 sq m (includes garage)
Limited Use Area(s) = 159 sq ft / 15 sq m
Outbuilding = 45 sq ft / 4 sq m
Total = 2181 sq ft / 203 sq m
For identification only - Not to scale

Energy Efficiency Rating		Current	Potential
Very energy efficient - lower running costs	A		
Energy efficient - lower running costs	B		
Decent energy efficiency - lower running costs	C	73	85
Some energy efficiency - lower running costs	D		
Not very energy efficient - higher running costs	E		
Energy inefficient - higher running costs	F		
Very energy inefficient - higher running costs	G		

EU Directive



Certified Property Measurer Floor plan produced in accordance with RICS Property Measurement Standards incorporating International Property Measurement Standards (IPMS Residential). © rinchcom 2022. Produced for Real Estates - REF: R20498



Real Estates Woodside Park Office:
14/14a Sussex Ring
Woodside Park N12 7HX

ll : 020 8445 6387
e : info@realestates-wsp.co.uk
w : www.realestates-wsp.co.uk