



Lynton Mead, Totteridge, N20 8DH  
Price Guide £1,150,000 Freehold Council Tax Band F

**REAL ESTATES**  
Est.1981

Estate Agents · Residential Sales · Investments · Lettings

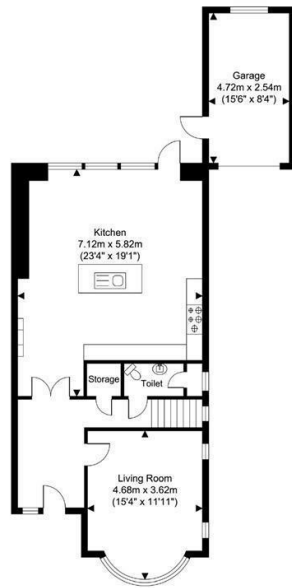
Real Estates are delighted to offer for sale this very well presented 4 bedroom, 2 bathroom semi-detached property within the heart of Totteridge, benefiting from OFF STREET PARKING, GARAGE AND A GOOD SIZED GARDEN.

Situated in a popular tree-lined residential turning, within the catchment area for primary schools and walking distance of Totteridge & Whetstone Northern Line tube station. Cafes, boutiques, restaurants and shops including Waitrose and Marks & Spencer Food Hall are conveniently located on Whetstone High Road.

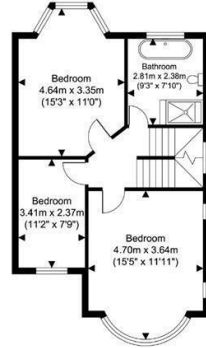
We anticipate high demand so would recommend viewing the property at your earliest convenience in order to avoid disappointment. Please contact our Totteridge office. Sole Agent.



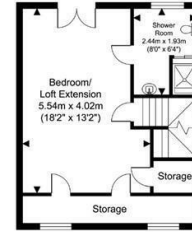




Ground Floor



First Floor



Second Floor

77 Lynton Mead, Whetstone, London, N20 8DH  
 APPROX. GROSS INTERNAL FLOOR AREA 1808 SQ FT / 168 SQ M

©Eagle Property Solutions



Energy Efficiency Rating		Current	Potential
Very energy efficient - lower running costs			
A	92-100%		85
B	81-91%		
C	69-80%	69	
D	55-68%		
E	39-54%		
F	21-38%		
G	1-20%		
Not energy efficient - higher running costs			
EU Directive			



Real Estates Totteridge Office:  
 32 Totteridge Lane  
 Totteridge N20 9QJ

ll : 0208 445 3132  
 e : info@realestates-wsp.co.uk  
 w : www.realestates-wsp.co.uk