



Arlington, Woodside Park, N12 7JR
£4,100 Per Calendar Month Council Tax Band G

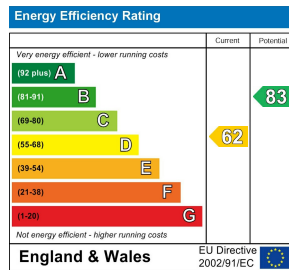
REAL ESTATES
Est. 1981

Estate Agents · Residential Sales · Investments · Lettings

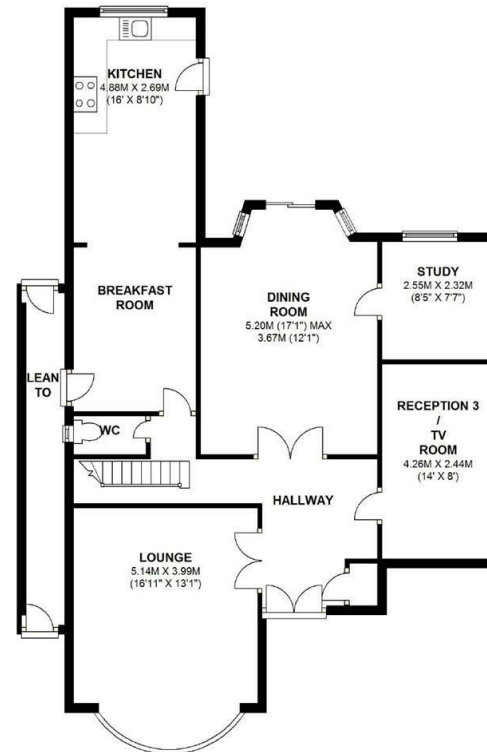
* AVAILABLE NOW * UNFURNISHED * A 4 BEDROOM DETACHED family home in the heart of Woodside Park and within the catchment for Woodridge Primary School. Woodside Park and West Finchley Northern Line tube stations are close by.

The generous living accommodation comprises lounge, dining room, fitted kitchen/breakfast room, study and tv room to the ground floor. There are 4 bedrooms and 2 bathrooms (1 en suite) to the 1st floor.

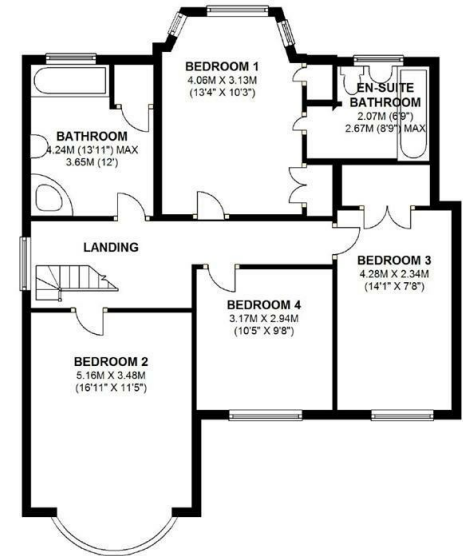
The rear garden extends to approx 80' and the front provides off street parking for 2-3 cars.



GROUND FLOOR
APPROX. 100.0 SQ. METRES (1076.0 SQ. FEET)



FIRST FLOOR
APPROX. 83.0 SQ. METRES (893.3 SQ. FEET)



TOTAL AREA: APPROX. 175.6 SQ. METRES (1890.3 SQ. FEET)