



Holden Road, Woodside Park, N12 7DY
£1,400 Per Calendar Month Council Tax Band C

REAL ESTATES
Est. 1981

Estate Agents · Residential Sales · Investments · Lettings

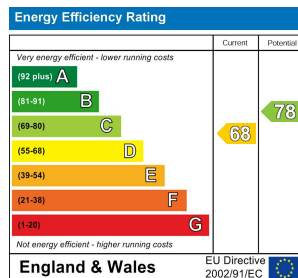
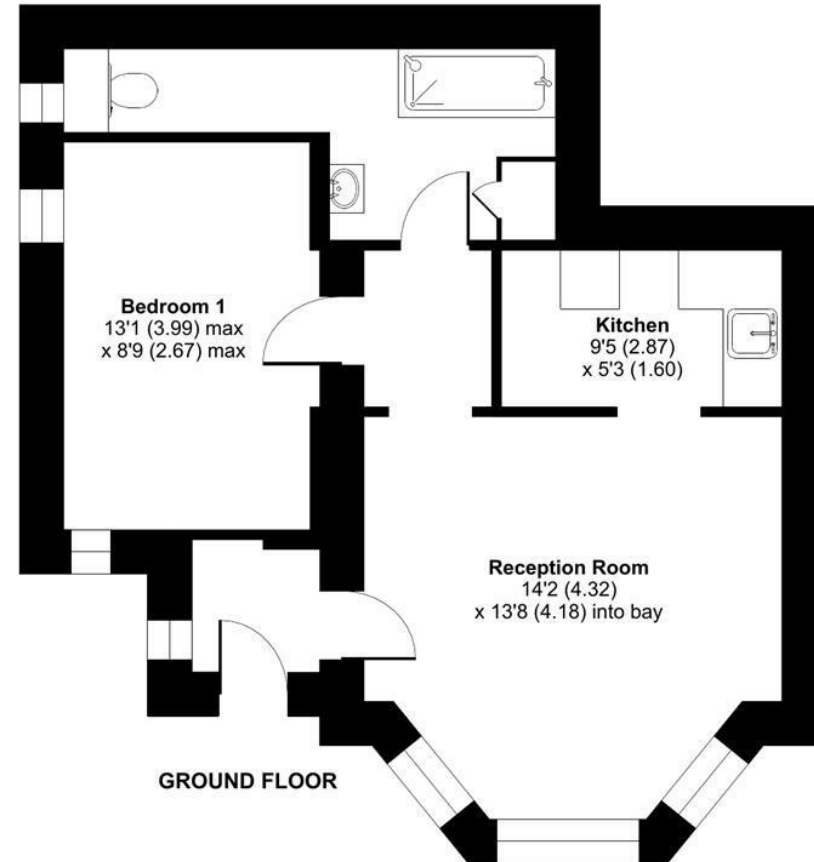
A well presented character 1 bedroom ground floor apartment in this period conversion, ideally situated in the heart of Woodside Park and just a stone's throw to Woodside Park NORTHERN LINE tube station. Local cafes, shops and parkland are all within easy walking distance.

Offered with OFF STREET PARKING, this delightful property also has the benefit of a COMMUNAL GARDEN, HIGH CEILINGS AND LARGE SASH WINDOWS.

* PART FURNISHED * AVAILABLE FROM 3RD APRIL 2023 *

Holden Road, London, N12

Total = 490 sq ft / 45.5 sq m
For identification only - Not to scale



Floor plan produced in accordance with RICS Property Measurement Standards incorporating International Property Measurement Standards (IPMS2 Residential). © nichecom 2023. Produced for Real Estates. REF: 957457