



Walmington Fold, Woodside Park, N12 7LD
Per Calendar Month £2,700 Council Tax Band F

REAL ESTATES
Est.1981

Estate Agents · Residential Sales · Investments · Lettings

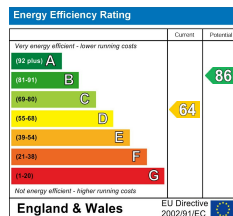
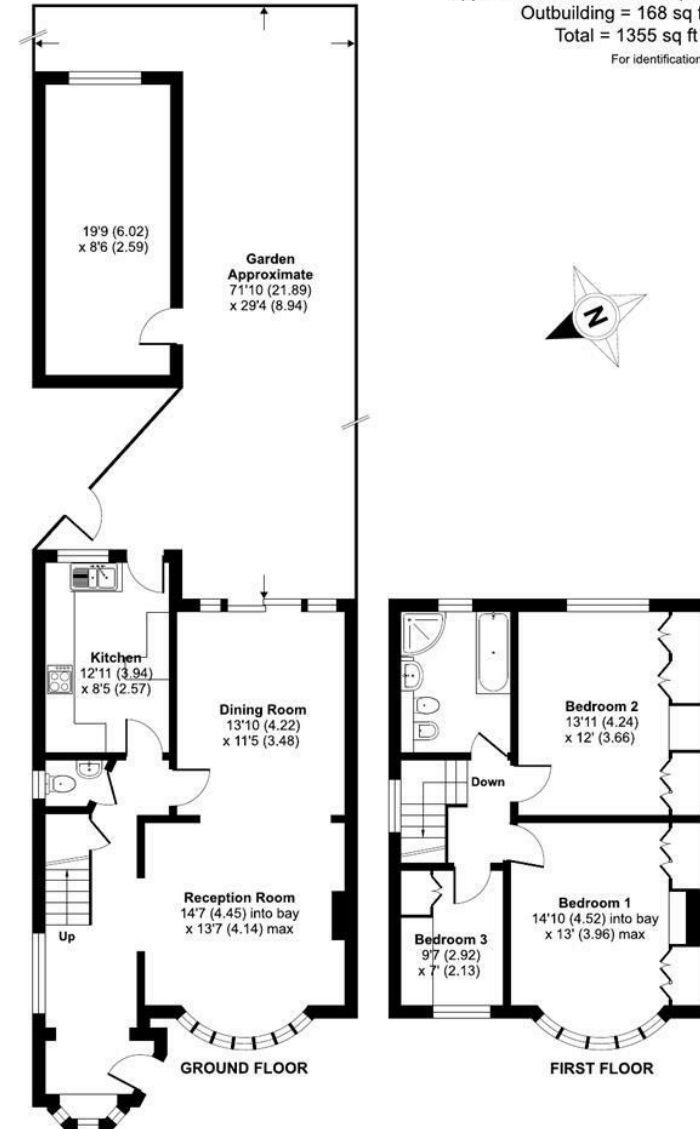
***AVAILABLE 17TH JUNE * FURNISHED/UNFURNISHED * A 3 BEDROOM SEMI-DETACHED family home backing onto parkland, in this sought after residential road in the heart of Woodside Park .**

Local shops, cafes, bus services and Woodside Park Northern Line tube station are all within a short walk.

*** THRU LOUNGE/DINING ROOM * FITTED KITCHEN * GUEST CLOAKROOM * 3 BEDROOMS * BATHROOM/WC * APPROX 70 FT REAR GARDEN * OFF STREET PARKING * AVAILABLE 17TH JUNE * FURNISHED/UNFURNISHED ***

Walmington Fold, London, N12

Approximate Area = 1187 sq ft / 110.2 sq m
 Outbuilding = 168 sq ft / 15.6 sq m
 Total = 1355 sq ft / 125.8 sq m
 For identification only - Not to scale



Floor plan produced in accordance with RICS Property Measurement Standards incorporating International Property Measurement Standards (IPMS2 Residential). © nichecom 2022. Produced for Real Estates. REF: 654706