



Greenway, Totteridge, N20 8ED
£4,500 Per Calendar Month Council Tax Band G

REAL ESTATES
Est.1981

Estate Agents · Residential Sales · Investments · Lettings

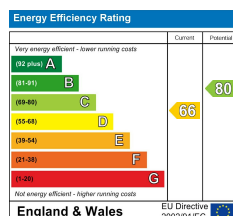
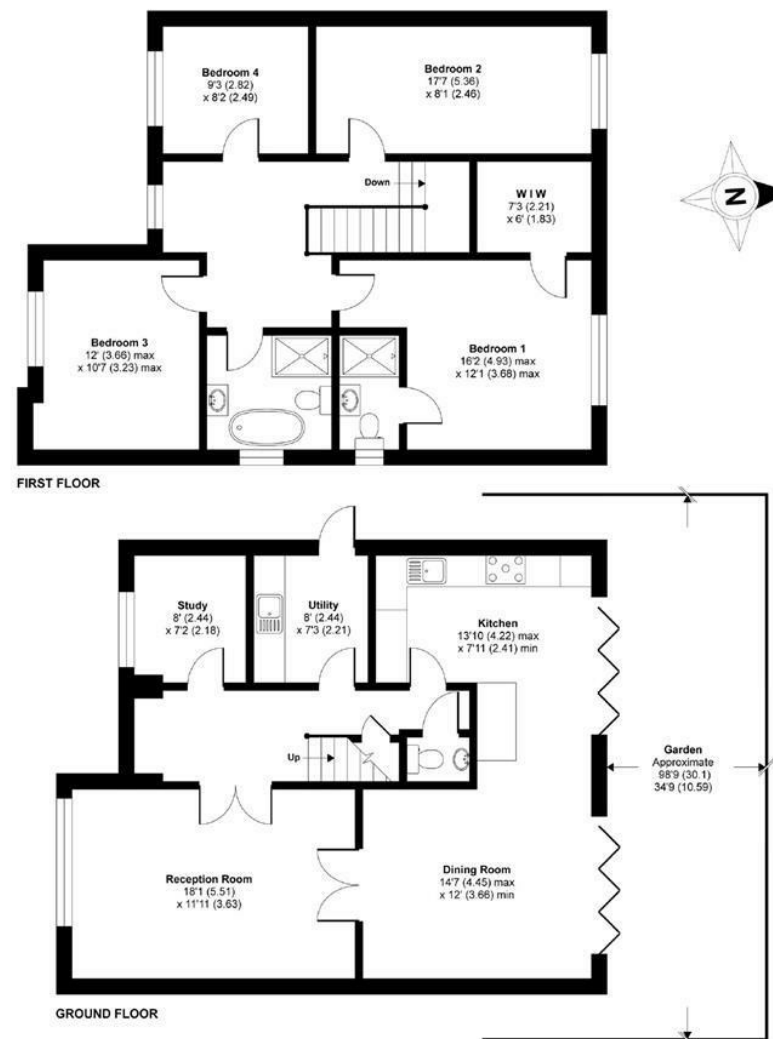
***AVAILABLE END JUNE* FURNISHED/UNFURNISHED * A 4 BEDROOM, 2 BATHROOM (1 en suite) DETACHED HOUSE** situated in this sought after residential location, close to Totteridge & Whetstone Northern Line tube station as well as the multiple shops, boutiques, restaurants and cafes at Whetstone High Road.

This well presented family home offers guest cloakroom, open plan living area, fitted kitchen/breakfast room with bi fold doors onto the patio and good size rear garden, separate study and a utility room to the ground floor. The 1st floor provides 4 bedrooms and 2 bathrooms (1 en suite). Off street parking.

Greenway, London, N20

Approximate Area = 1687 sq ft / 156.7 sq m

For identification only - Not to scale



Floor plan produced in accordance with RICS Property Measurement Standards incorporating International Property Measurement Standards (IPMS2 Residential). © richcom 2021. Produced for Real Estates. REF: 798808