



Linkside, Woodside Park, N12 7LG  
£1,025,000 Freehold Council Tax Band F

**REAL ESTATES**  
Est. 1981

Estate Agents · Residential Sales · Investments · Lettings

A well presented 4 BEDROOM 2 BATHROOM SEMI-DETACHED family home, backing onto Finchley Golf Club in this sought after location, within the catchment area for schools and within walking distance to West Finchley Northern Line tube station and local shops.

The property offers a well proportioned accommodation comprising through lounge/dining room, separate kitchen and utility room and guest cloakroom. The rest of the accommodation comprises 4 bedrooms, 2 bathrooms, a fabulous rear garden, off street parking for 2 cars and a shared driveway.

For further information and an appointment to view, please contact Sole Agent Real Estates on 020 8445 6387.

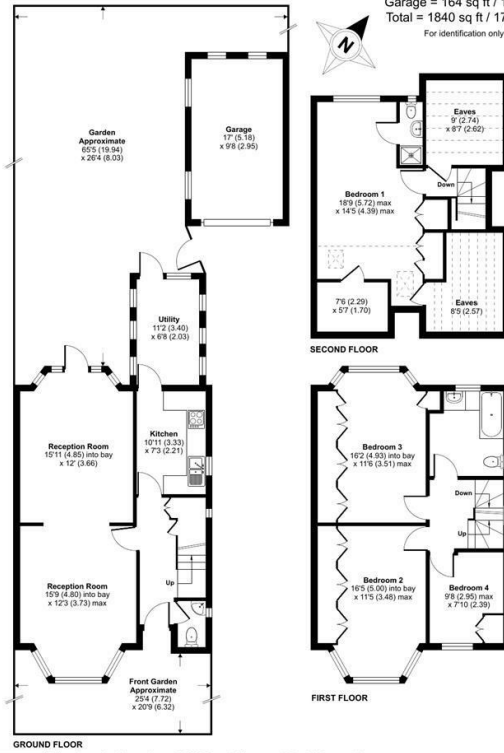




Denotes restricted head height

### Linkside, London, N12

Approximate Area = 1585 sq ft / 147.2 sq m  
 Limited Use Area(s) = 91 sq ft / 8.4 sq m  
 Garage = 164 sq ft / 15.2 sq m  
 Total = 1840 sq ft / 170.8 sq m  
 For identification only - Not to scale



Certified Property Measurer  
 Floor plan produced in accordance with RICS Property Measurement Standards incorporating International Property Measurement Standards (IPMS Residential). © rinchcom 2023. Produced for Real Estates - REF: 1011216

| Energy Efficiency Rating                         |   | Current | Potential |
|--|---|---------|-----------|
| Very energy efficient - lower running costs      | A |         |           |
| Energy efficient - lower running costs           | B |         | 79        |
| Decent energy efficiency - lower running costs   | C |         |           |
| Some energy efficiency - lower running costs     | D | 52      |           |
| Not very energy efficient - higher running costs | E |         |           |
| Energy inefficient - higher running costs        | F |         |           |
| Very energy inefficient - higher running costs   | G |         |           |

EU Directive

