



Belmont Close, Totteridge, N20 8QT
£4,200 Per Calendar Month Council Tax Band G

REAL ESTATES
Est.1981

Estate Agents · Residential Sales · Investments · Lettings

****AVAILABLE NOW**** 5 BEDROOM, 2 BATHROOM DETACHED home situated in one of Totteridge's most desirable roads. Belmont Close is a quiet cul-de-sac in the heart of Totteridge, surrounded by open space and South Herts Golf Club.

The property is currently arranged over 3 floors and further benefits include a garage via own driveway providing off street parking for 2/3 cars.

Belmont Close, London, N20

Approximate Area = 2246 sq ft / 209 sq m (includes garage)

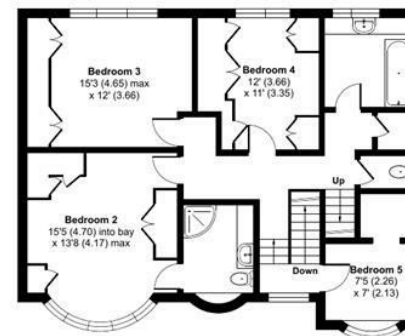
Limited Use Area(s) = 167 sq ft / 16 sq m

Total = 2413 sq ft / 225 sq m

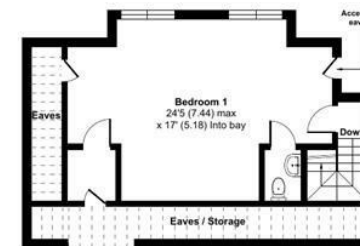
For identification only - Not to scale



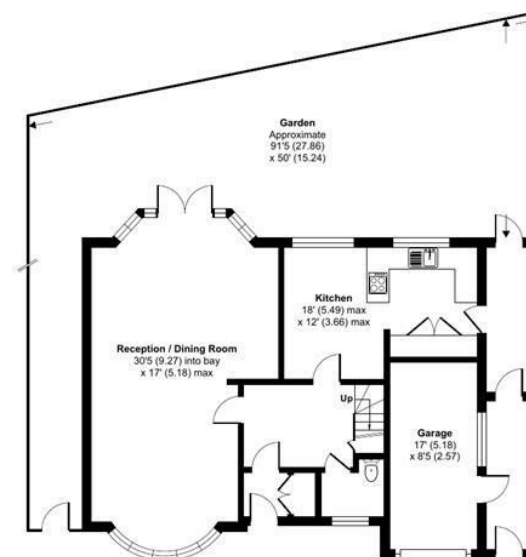
Denotes restricted head height



FIRST FLOOR



SECOND FLOOR



GROUND FLOOR

Energy Efficiency Rating		Current	Potential
Very energy efficient - lower running costs			
92-100	A		81
81-91	B		
69-80	C		
55-68	D	61	
39-54	E		
21-38	F		
1-20	G		
Not energy efficient - higher running costs			
England & Wales		EU Directive 2002/91/EC	



Floor plan produced in accordance with RICS Property Measurement Standards incorporating International Property Measurement Standards (IPMS2 Residential). © nichecom 2022. Produced for Real Estates. REF: 931632