



Holden Road, Woodside Park, N12 7EL
£625,000 Leasehold Council Tax Band F

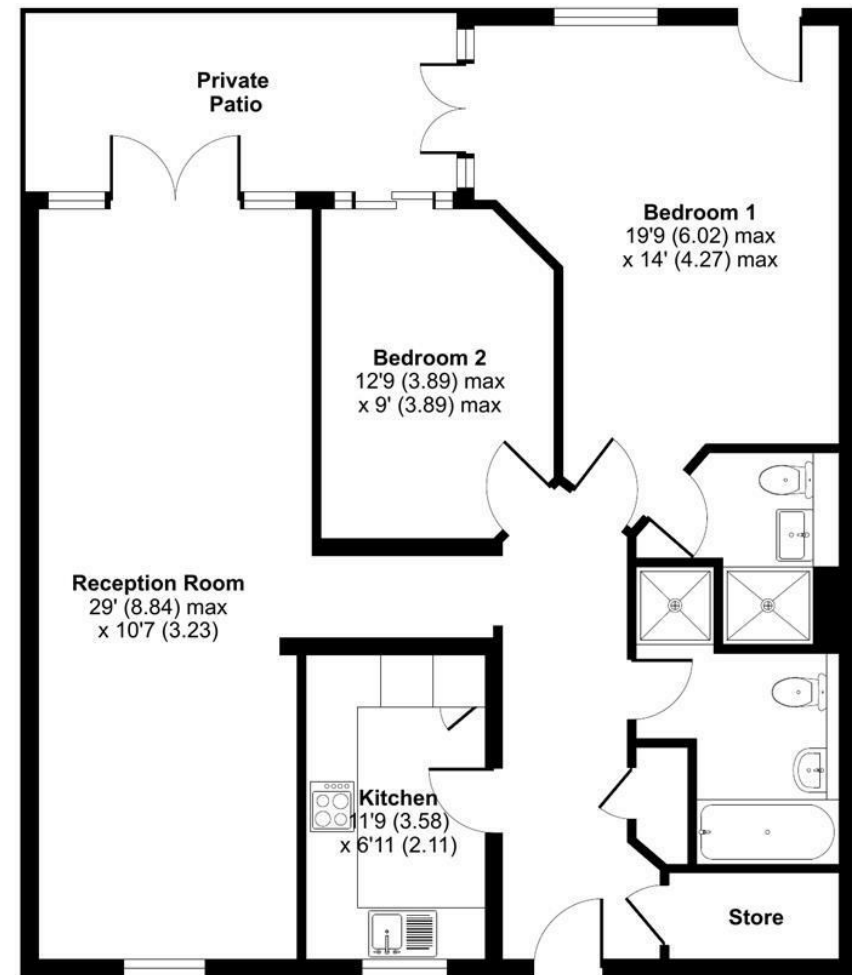
REAL ESTATES
Est. 1981
Estate Agents · Residential Sales · Investments · Lettings

SOLD OFF MARKET A 2 BEDROOM, 2 BATHROOM GROUND FLOOR APARTMENT with PRIVATE PATIO in one of Woodside Park's most sought after developments.

Holden Road, London, N12

Approximate Area = 1000 sq ft / 92.9 sq m

For identification only - Not to scale



GROUND FLOOR

Energy Efficiency Rating		Current	Potential
Very energy efficient - lower running costs			
92-100	A		
81-91	B		
69-80	C	75	79
55-68	D		
39-54	E		
21-38	F		
1-20	G		
Not energy efficient - higher running costs			
England & Wales		EU Directive 2002/91/EC	



Floor plan produced in accordance with RICS Property Measurement Standards incorporating International Property Measurement Standards (IPMS2 Residential). © nichecom 2023. Produced for Real Estates. REF: 984559

Real Estates Woodside Park Office:
14/14a Sussex Ring
Woodside Park N12 7HX

ll : 020 8445 6387
e : info@realestates-wsp.co.uk
w : www.realestates-wsp.co.uk