



Field End, Arkley, EN5 3EZ

£1,190,000 Freehold

Council Tax Band G

REAL ESTATES
Est. 1981

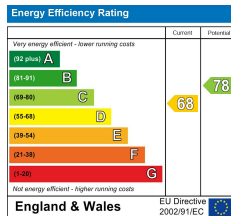
Estate Agents · Residential Sales · Investments · Lettings

Located in this sought after cul-de-sac, a well presented 4 BEDROOM, 3 BATHROOM, 2 RECEPTION ROOM DETACHED FAMILY HOME, offering bright and spacious accommodation, as well as a mature rear garden with sun terrace, double garage and carriage driveway providing off street parking.

The ground floor comprises large L-shaped reception room, dining room, fitted kitchen/breakfast room, study, guest cloakroom and utility room with door to the integral double garage. The 1st floor provides a master bedroom with en suite bathroom and separate shower, 3 further bedrooms, family bathroom and a shower room.

Situated within 5 miles of both the M1 and M25 motorways providing easy access to all of London airports. Central London is approx 30 mins by car. Barnet High Street and The Spires shopping mall are easily accessible. High Barnet Northern Line tube station and both New Barnet and Elstree Main Line stations are close by. Renowned state and private schools in the area include Haberdashers Aske's, Belmont/Mill Hill School and QE Boys. Leisure facilities close by include Dyrham Park and Arkley Golf Clubs.

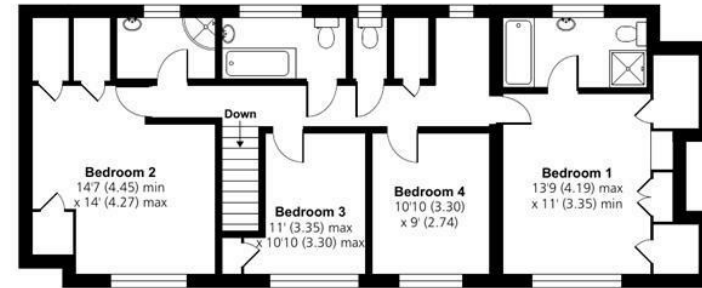
Please contact our Totteridge office for further information or to arrange a viewing.



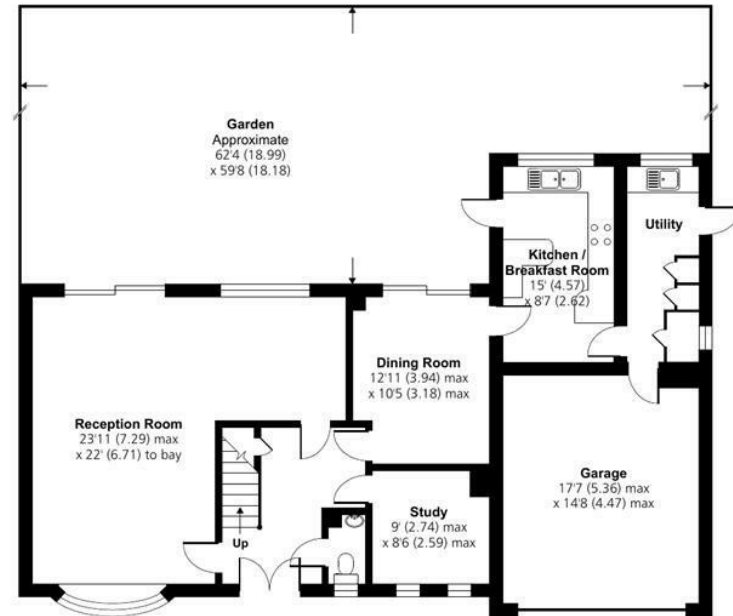
Field End, Barnet, EN5

Approximate Area = 2276 sq ft / 211.4 sq m (includes garage)

For identification only - Not to scale



FIRST FLOOR



GROUND FLOOR



Floor plan produced in accordance with RICS Property Measurement Standards incorporating International Property Measurement Standards (IPMS2 Residential). © nichecom 2023. Produced for Real Estates. REF: 1050915