



Harmsworth Way, Totteridge, N20 8JT
Per Calendar Month £4,000 Council Tax Band H

REAL ESTATES
Est. 1981

Estate Agents · Residential Sales · Investments · Lettings

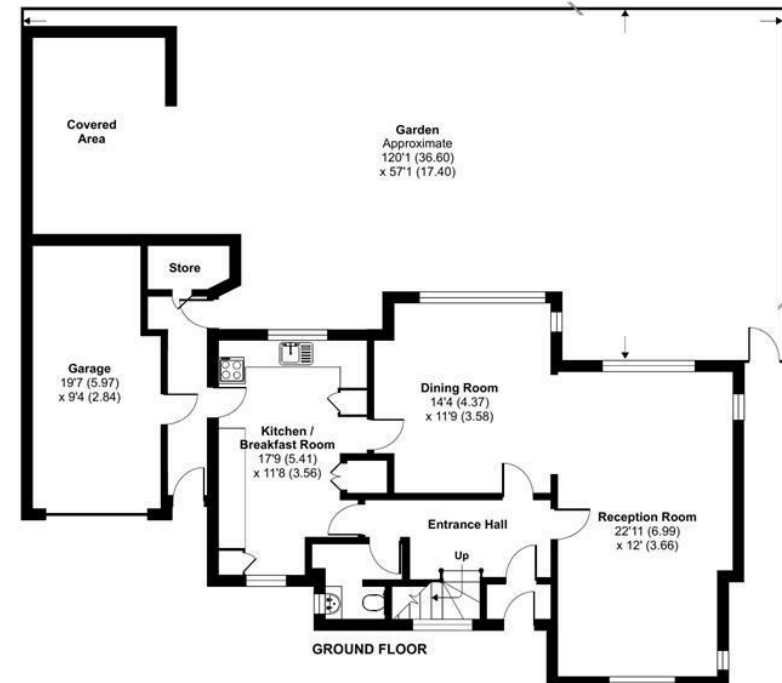
***AVAILABLE NOW * PART FURNISHED * ON A 6 MONTH AGREEMENT * A 4 BEDROOM DETACHED HOUSE** situated in this sought after residential location, off Totteridge Lane.

Whetstone High Road's multiple shops, boutiques, restaurants and coffee shops, together with Totteridge & Whetstone Northern Line tube station are all within easy reach.

Harmsworth Way, London, N20

Approximate Area = 1843 sq ft / 171.2 sq m
(includes garage and excludes store / covered area / lean to)

For identification only - Not to scale



Energy Efficiency Rating		
	Current	Potential
Very energy efficient - lower running costs		
102-109) A		
81-101) B		
69-80) C		
55-68) D		
39-54) E		
21-38) F		
1-20) G		
Not energy efficient - higher running costs		
	61	84
England & Wales	EU Directive 2002/91/EC	



Floor plan produced in accordance with RICS Property Measurement Standards incorporating International Property Measurement Standards (IPMS2 Residential). © nichecom 2023. Produced for Real Estates. REF: 1064838