



Southway, Totteridge, N20 8DD

£4,750 Per Calendar Month

Council Tax Band G

REAL ESTATES
Est.1981

Estate Agents · Residential Sales · Investments · Lettings

*AVAILABLE 1ST MARCH * FURNISHED * A 4 bedroom, 3 bathroom (2 en suite) semi-detached home situated in the heart of Totteridge and offering spacious and well proportioned accommodation. Shops and restaurants at the High Road, Whetstone together with Totteridge & Whetstone tube station are close by.

To the rear of the property is a landscaped garden of approx 85' with decked terrace leading to lawn with a detached brick built studio.

* Spacious Entrance Hall with solid wood flooring * Lounge with feature fireplace and access to terrace * Dining Room * Kitchen/Breakfast Room with integrated appliances and tiled underfloor heating * Laundry Room * Guest Cloakroom * 3 Bedrooms and 2 baths (1 en suite) to 1st floor * Master Bedroom with Walk-in wardrobe and En Suite Bath to 2nd floor *

* AVAILABLE 1ST MARCH * FURNISHED *

Southway, London, N20

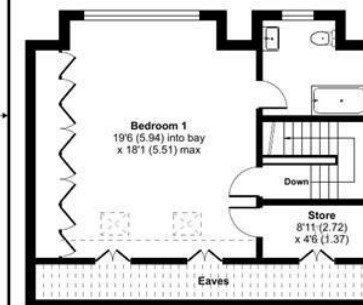
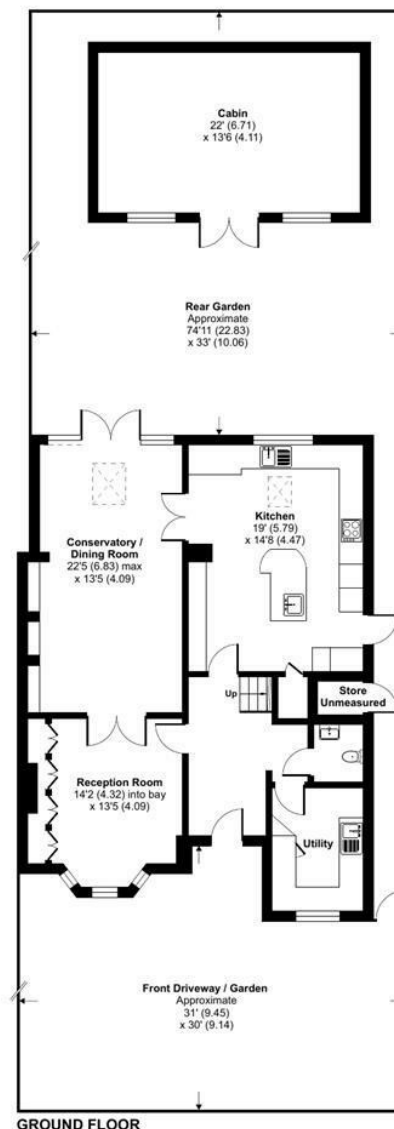
Approximate Area = 2238 sq ft / 207.9 sq m (excludes store)

Limited Use Area(s) = 123 sq ft / 11.4 sq m

Outbuilding = 297 sq ft / 27.5 sq m

Total = 2683 sq ft / 246.8 sq m

For identification only - Not to scale



Energy Efficiency Rating		Current	Potential
Very energy efficient - lower running costs			
(92 plus) A			
(81-91) B			
(69-80) C			72
(55-68) D			
(39-54) E		43	
(21-38) F			
(1-20) G			
Not energy efficient - higher running costs			
England & Wales		EU Directive 2002/91/EC	



Floor plan produced in accordance with RICS Property Measurement Standards incorporating International Property Measurement Standards (IPMS2 Residential). © nichecom 2024. Produced for Real Estates. REF: 1071540