



Woodside Grange Road, Woodside Park, N12 8LR  
£1,550 Per Calendar Month    Council Tax Band E

**REAL ESTATES**  
Est. 1981

Estate Agents · Residential Sales · Investments · Lettings

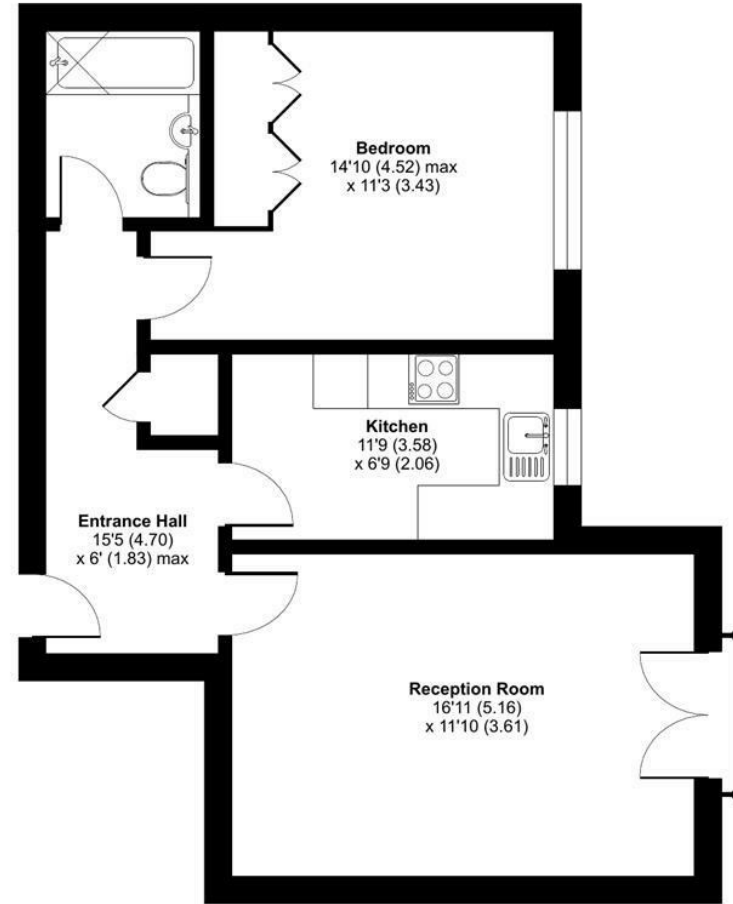
\*AVAILABLE FROM 5TH APRIL \* FURNISHED \* A well presented 1 BEDROOM GROUND FLOOR flat close to Woodside Park Northern Line tube station and local shops.

\* RECEPTION with JULIET BALCONY \* FITTED KITCHEN \* BEDROOM with FITTED WARDROBES \* BATHROOM \* ALLOCATED PARKING SPACE \* WELL MAINTAINED COMMUNAL GARDENS \*

## Woodside Grange Road, N12

Approximate Area = 584 sq ft / 54.3 sq m

For identification only - Not to scale



RAISED GROUND FLOOR

Energy Efficiency Rating		Current	Potential
Very energy efficient - lower running costs			
(92 plus) A			
(81-91) B		80	81
(69-80) C			
(55-68) D			
(39-54) E			
(21-38) F			
(1-20) G			
Not energy efficient - higher running costs			
England & Wales	EU Directive 2002/91/EC		



Floor plan produced in accordance with RICS Property Measurement Standards incorporating International Property Measurement Standards (IPMS2 Residential). © nichecom 2024. Produced for Real Estates. REF: 1103389