



Barnet Road, Arkley, EN5 3LJ
Asking Price £2,895,000 Freehold

Council Tax Band H

REAL ESTATES
Est.1981

Estate Agents · Residential Sales · Investments · Lettings

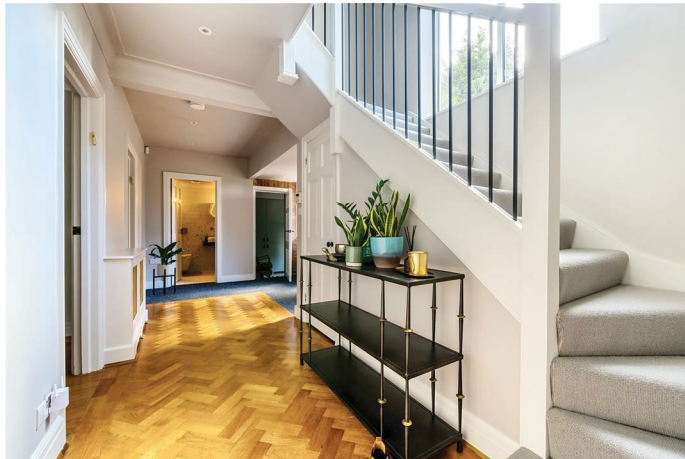
Real Estates are delighted to offer for sale this superb, newly renovated 5 bedroom detached family home standing on over a half acre plot and set back from Barnet Road behind security gates, accessed via a private driveway opening onto a large forecourt providing off street parking for a number of cars.

The ground floor accommodation features a modern Neil Lerner fitted kitchen and dining area with bi- folding doors opening onto the garden, 3 reception rooms, study, gym, utility room and guest cloakroom. The 1st floor comprises spacious master bedroom suite, 2 further double bedrooms and a family bathroom. There are 2 recently rebuilt double bedrooms, both en-suite, to the 2nd floor.

The stunning, large rear garden provides a private tranquil setting.

This lovely home is ideally located within easy reach of both Barnet and Mill Hill shopping centres and local transport facilities. Brent Cross is approx 5 miles away and the M25, A1 and M1 are all easily accessible. The area is renowned for excellent state and private schools, including Queen Elizabeth Boys and Girls, Belmont, St. Martha's and Haberdashers Aske's.

Early viewing highly recommended via our Totteridge office.

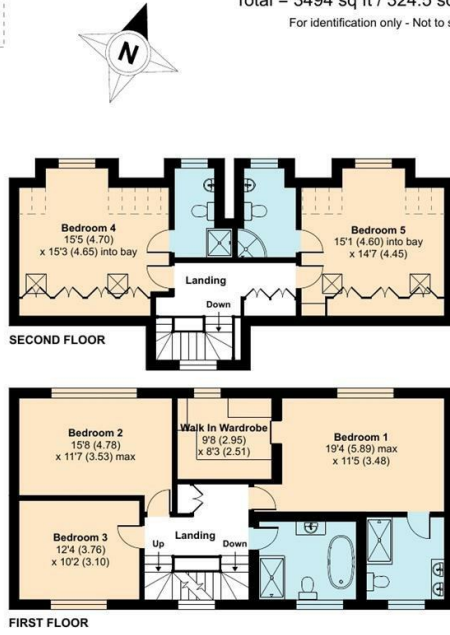




Midglea, Barnet Road, Barnet, EN5

Approximate Area = 3313 sq ft / 307.8 sq m
 Limited Use Area(s) = 48 sq ft / 4.4 sq m
 Outbuildings = 133 sq ft / 12.3 sq m
 Total = 3494 sq ft / 324.5 sq m
 For identification only - Not to scale

Energy Efficiency Rating		Current	Potential
Very energy efficient - lower running costs			
A			
B		72	79
C			
D			
E			
F			
G			
Not energy efficient - higher running costs			
EU Directive			



RICS Certified Property Measurer Floor plan produced in accordance with RICS Property Measurement Standards incorporating International Property Measurement Standards (IPMS2 Residential). ©ntchem 2022. Produced for Stations. REF: 1013983

