



Birley Road, Whetstone, N20 0EZ
£575,000 Leasehold Council Tax Band D

REAL ESTATES
Est.1981

Estate Agents · Residential Sales · Investments · Lettings

Viewing advised of this well presented first floor, two bedroom maisonette situated on a desirable and quiet road off of Totteridge Lane, within a stone throw of Totteridge & Whetstone underground station and local amenities on Whetstone High Road.

The property comprises of a good sized lounge and kitchen/breakfast room, two bedrooms and family bathroom and has the added benefit of a roof terrace. In addition, the loft has been made into another room to use at your choice with potential to officially convert if required. To the rear, the property has its own private garden. Benefitting from NO SERVICE CHARGE OR GROUND RENT and if offered Chain Free.

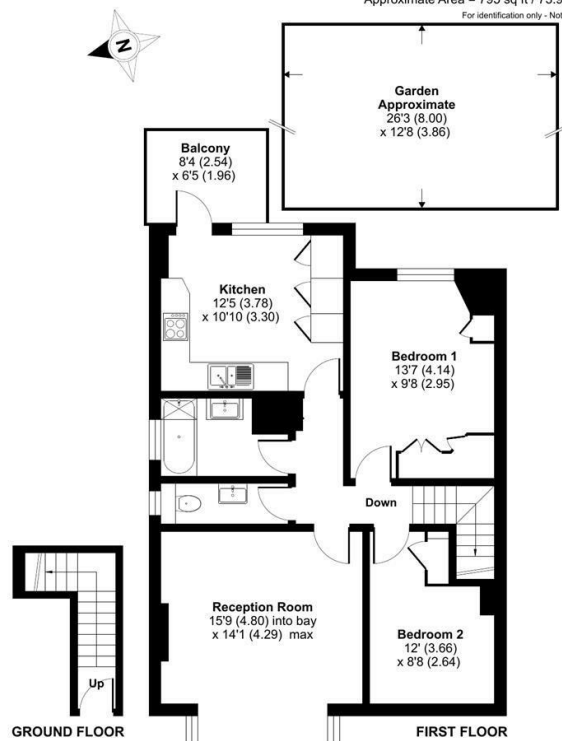
Please contact our Totteridge office for further information or to arrange a viewing.





Birley Road, London, N20

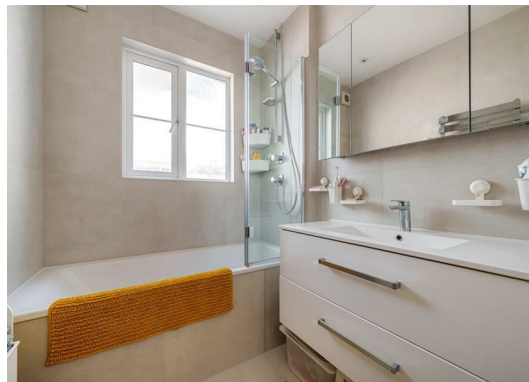
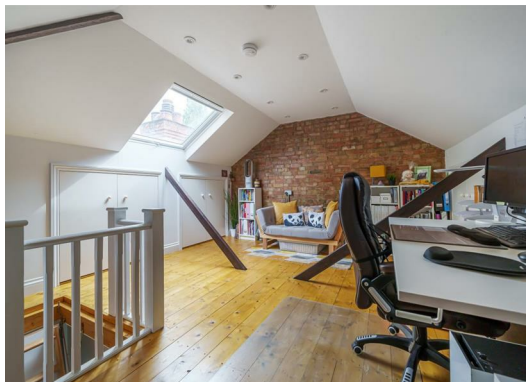
Approximate Area = 795 sq ft / 73.9 sq m
For identification only - Not to scale



Certified Property Measurer
Floor plan produced in accordance with RICS Property Measurement Standards incorporating International Property Measurement Standards (IPMS Residential). © richcom 2023.
Produced for Real Estates - REF: 1039030

Energy Efficiency Rating		Current	Potential
Very energy efficient - lower running costs	A		
Energy efficient - lower running costs	B		
Decent energy efficiency - lower running costs	C		
Some energy efficiency - lower running costs	D		
Energy efficiency - lower running costs	E		
Some energy efficiency - higher running costs	F		
Energy efficiency - higher running costs	G		
		67	78

EU Directive



Real EstatesTotteridge Office:
32 Totteridge Lane
Totteridge N20 9QJ

ll : 0208 445 3132
e : info@realestates-wsp.co.uk
w : www.realestates-wsp.co.uk