



Holden Road, Woodside Park, N12 7DP
£1,600 Per Calendar Month Council Tax Band E

REAL ESTATES
Est.1981

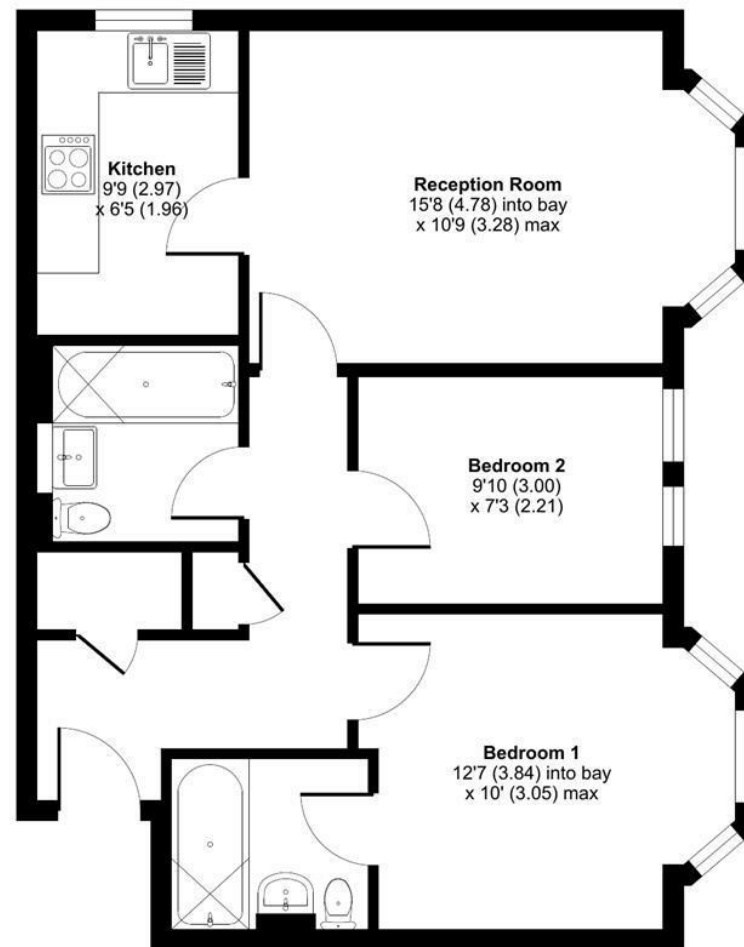
Estate Agents · Residential Sales · Investments · Lettings

***AVAILABLE NOW * A 2 BEDROOM 2 BATHROOM (1 EN SUITE) 1ST FLOOR FLAT** ideally situated within a stone's throw to Woodside Park Northern Line tube station. Local shops, bus services and parkland are within easy walking distance.

*** 2 BEDROOMS * 2 BATHROOMS (1 EN SUITE * FITTED KITCHEN * RECEPTION ROOM * ALLOCATED PARKING BAY * COMMUNAL GARDEN * FURNISHED OR UNFURNISHED * AVAILABLE NOW ***

Holden Road, London, N12

Approximate Area = 595 sq ft / 55.2 sq m
For identification only - Not to scale



FIRST FLOOR

Energy Efficiency Rating		Current	Potential
Very energy efficient - lower running costs			
(92 plus) A			
(81-91) B			
(69-80) C		74	80
(55-68) D			
(39-54) E			
(21-38) F			
(1-20) G			
Not energy efficient - higher running costs			
England & Wales		EU Directive 2002/91/EC	



Floor plan produced in accordance with RICS Property Measurement Standards incorporating International Property Measurement Standards (IPMS2 Residential). © nichecom 2023. Produced for Real Estates. REF: 1109407