



Amport Place, Mill Hill, NW7 1BH
£370,000 Leasehold Council Tax Band D

REAL ESTATES
Est. 1981

Estate Agents · Residential Sales · Investments · Lettings

Real Estates are delighted to offer this 2 BEDROOM 1ST FLOOR APARTMENT in the popular Ridgemont Estate, neighbouring Millbrook Park. Mill Hill East (Northern Line) tube station and local shops are all within easy reach.

The property comprises an open plan fitted kitchen and reception room with Juliet balcony, two bedrooms, bathroom/wc and storage cupboards. There is 1 ALLOCATED PARKING SPACE as well as availability to park on the adjacent street.

LEASE: 125 YEARS FROM FEBRUARY 2011 / NO GROUND RENT / SERVICE CHARGE: £213.12 PM

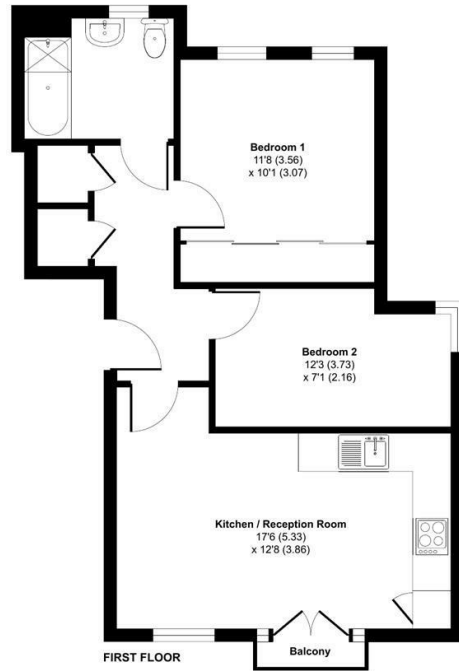
Sole Agent





Amport Place, London, NW7

Approximate Area = 534 sq ft / 49.6 sq m
For identification only - Not to scale



Certified Property Measurer
Floor plan produced in accordance with RICS Property Measurement Standards incorporating International Property Measurement Standards (IPMS Residential). © richcom 2024. Produced for Real Estates - REF: 1110062

Energy Efficiency Rating		Current	Potential
Very energy efficient - lower running costs	A		
Energy efficient	B		
Decent	C	73	84
Needs improvement	D		
Energy inefficient - higher running costs	E		
Very energy inefficient - higher running costs	F		
Extremely energy inefficient - very high running costs	G		

EU Directive



Real Estates Woodside Park Office:
14/14a Sussex Ring
Woodside Park N12 7HX

ll : 020 8445 6387
e : info@realestates-wsp.co.uk
w : www.realestates-wsp.co.uk