



Walmington Fold, Woodside Park, N12 7LR
£4,420 PCM
Council Tax Band G

REAL ESTATES
Est.1981

Estate Agents · Residential Sales · Investments · Lettings

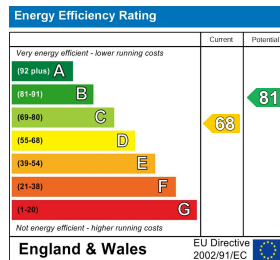
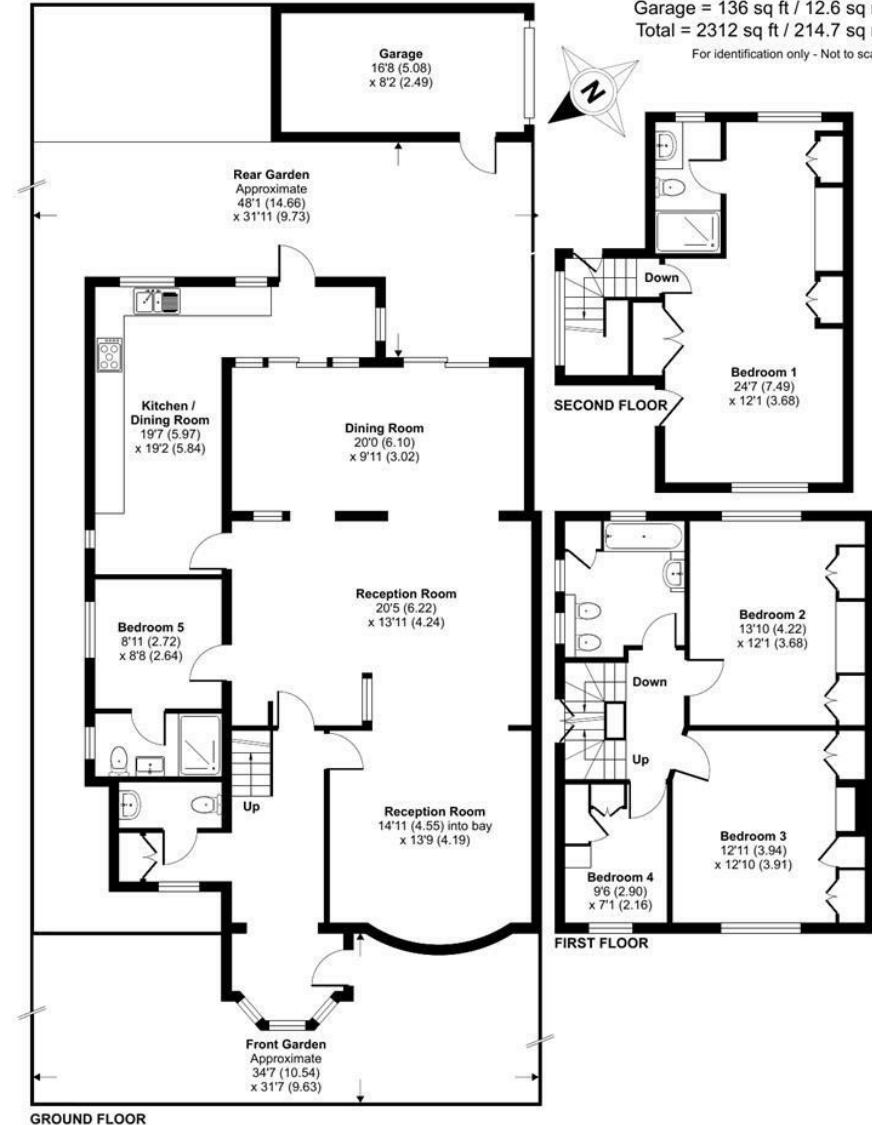
***AVAILABLE NOW * PART FURNISHED * A 4/5 BEDROOM SEMI-DETACHED** family home in this sought after residential road in the heart of Woodside Park .

Local shops, cafes, bus services and Woodside Park Northern Line tube station are all within a short walk.

*** THRU LOUNGE/DINING ROOM * FITTED KITCHEN * GUEST CLOAKROOM * A DOWNSTAIRS BEDROOM/OFFICE WITH EN-SUITE * 4 BEDROOMS * 3 BATHROOMS * REAR GARDEN * GARAGE FOR STORAGE ***

Walmington Fold, London, N12

Approximate Area = 2176 sq ft / 202.1 sq m
 Garage = 136 sq ft / 12.6 sq m
 Total = 2312 sq ft / 214.7 sq m
 For identification only - Not to scale



Floor plan produced in accordance with RICS Property Measurement Standards incorporating International Property Measurement Standards (IPMS2 Residential). © nichecom 2024. Produced for Real Estates. REF: 1145096

Real Estates Woodside Park Office:
 14/14a Sussex Ring
 Woodside Park N12 7HX

ll : 020 8445 6387
e : info@realestates-wsp.co.uk
w : www.realestates-wsp.co.uk