



Woodside Grove, Woodside Park, N12 8TJ
£475,000 Share of Freehold Council Tax Band E

REAL ESTATES
Est. 1981

Estate Agents · Residential Sales · Investments · Lettings

OFFERED CHAIN FREE A well presented 2 BEDROOM 2 BATHROOM GROUND FLOOR apartment in this purpose built block, situated close to Woodside Park Northern Line tube station and within a few minutes' walk to North Finchley High Road's amenities.

The spacious accommodation comprises 2 good size bedrooms, 2 bathrooms (1 en suite), large reception room, fitted kitchen, private terrace, communal gardens and off street parking.

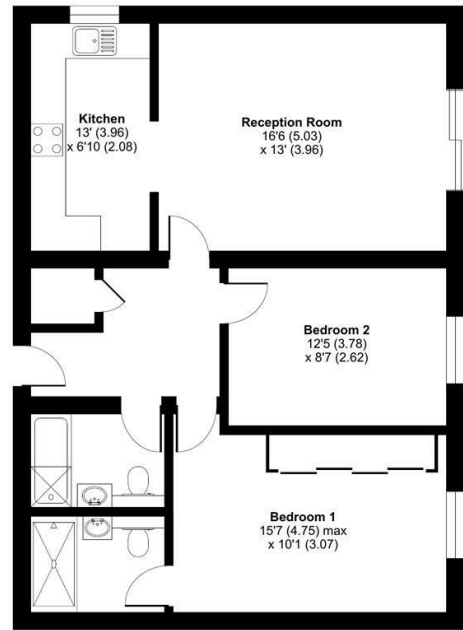
Share of Freehold





Woodside Grove, London, N12

Approximate Area = 802 sq ft / 74.5 sq m
For identification only - Not to scale



GROUND FLOOR



Floor plan produced in accordance with RICS Property Measurement Standards incorporating International Property Measurement Standards (IPMS Residential). © nrichcom 2023. Produced for Real Estates - REF: 998407

Energy Efficiency Rating		Current	Potential
Very energy efficient - lower running costs			
A	(91-100)		
B	(81-90)		
C	(69-80)	71	77
D	(59-68)		
E	(49-58)		
F	(39-48)		
G	(29-38)		
Not energy efficient - higher running costs			
EU Directive			



Real Estates Woodside Park Office:
14/14a Sussex Ring
Woodside Park N12 7HX

ll : 020 8445 6387
e : info@realestates-wsp.co.uk
w : www.realestates-wsp.co.uk