



Thornycroft Road, Whetstone, N20 0FW
£1,900 Per Calendar Month Council Tax Band D

REAL ESTATES
Est.1981

Estate Agents · Residential Sales · Investments · Lettings

****AVAILABLE 4th NOVEMBER**** Real Estates are delighted to bring to the market this **ONE BEDROOM FULLY FURNISHED APARTMENT** located in the highly sought after Oakleigh Grove Estate.

This third (top) floor apartment comprises of an entrance hallway with a storage cupboard and a utility cupboard, an open plan kitchen/lounge, a good sized bathroom, a large bedroom with fitted wardrobes and a balcony.

The property also comes with one parking space, lift access and is close to the High Road as well as Totteridge and Whetstone underground station on the Northern line.

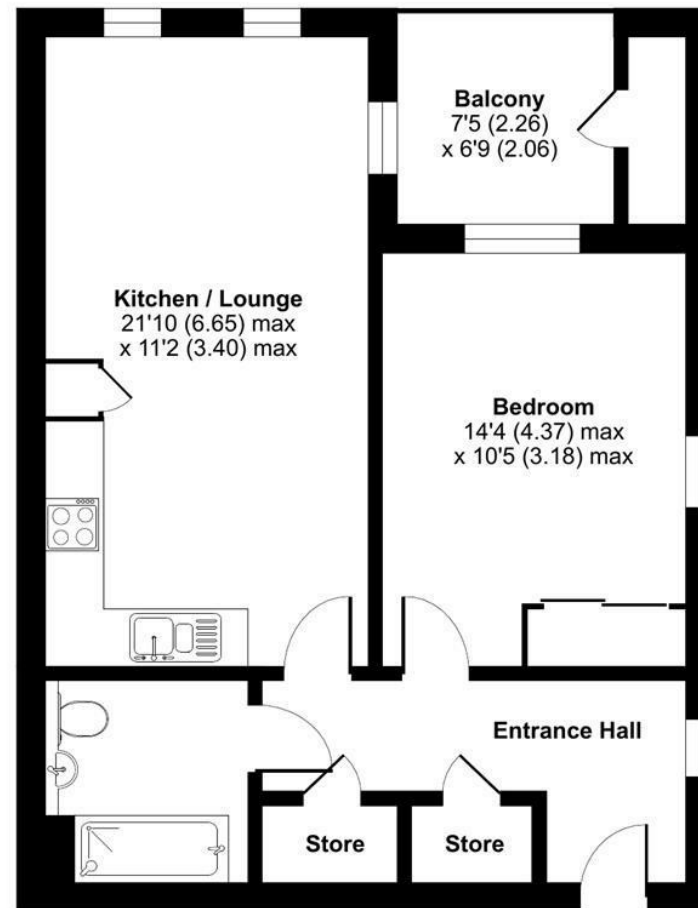
Thornycroft Road, London, N20

Approximate Area = 567 sq ft / 52.6 sq m

Outbuilding = 13 sq ft / 1.2 sq m

Total = 580 sq ft / 53.8 sq m

For identification only - Not to scale



THIRD FLOOR

Energy Efficiency Rating		Current	Potential
Very energy efficient - lower running costs			
102-109	A		
81-101	B	86	86
69-80	C		
55-68	D		
39-54	E		
21-38	F		
1-20	G		
Not energy efficient - higher running costs			
England & Wales		EU Directive 2002/91/EC	



Floor plan produced in accordance with RICS Property Measurement Standards incorporating International Property Measurement Standards (IPMS2 Residential). © nichecom 2024. Produced for Real Estates. REF: 1165952