



Barnet Lane, Totteridge, N20 8AU
£4,750 Per Calendar Month

Council Tax Band G

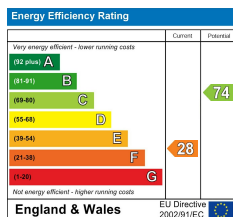
REAL ESTATES
Est. 1981

Estate Agents · Residential Sales · Investments · Lettings

***AVAILABLE EARLY FEB 25* FURNISHED/UNFURNISHED * A**
 beautifully presented and recently refurbished **DETACHED** family home,
 situated in a sought-after location opposite Greenbelt land and near South Herts
 Golf Club. Also within walking distance of The Orange Tree public house,
 Totteridge Green and Common.

The ground floor accommodation comprises a spacious entrance hall,
 kitchen/breakfast room leading into a reception room (currently used as a
 playroom but could be a dining room if preferred), further large separate
 reception, 3rd bedroom, study/5th bedroom, utility room and guest cloakroom. To
 the 1st floor there are 3 bedrooms and 2 bathrooms (1 en suite). The master
 suite benefits from a walk-in closet. Benefits include air conditioning to
 playroom, Kitchen and first floor bedrooms. Additionally under floor heating to
 majority of downstairs.

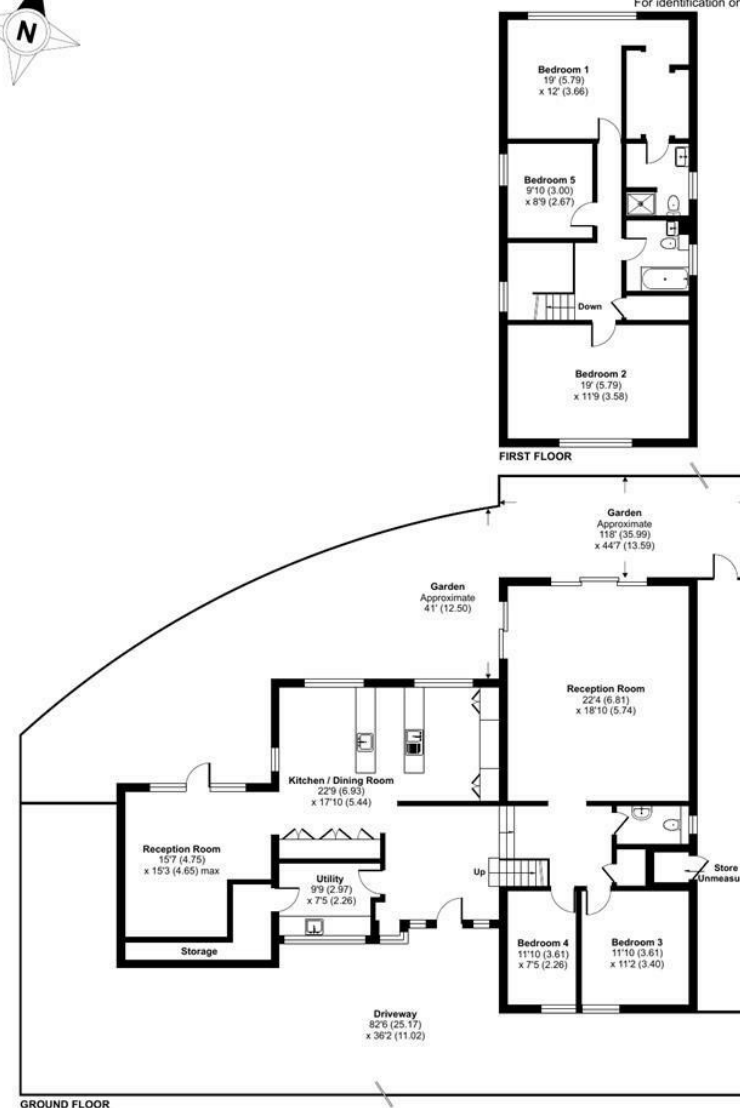
Externally, there is additional storage to front, off street parking for several cars
 and a mature 118 FT SOUTH-WEST FACING rear garden.



Barnet Lane, Totteridge, N20

Approximate Area = 2513 sq ft / 233.4 sq m (excludes store)

For identification only - Not to scale



Floor plan produced in accordance with RICS Property Measurement Standards incorporating International Property Measurement Standards (IPMS2 Residential). © nichecom 2024. Produced for Real Estates. REF: 1084566