



Ridgeview Road, Totteridge, N20 0HH  
£800,000 Freehold Council Tax Band E

**REAL ESTATES**  
Est.1981

Estate Agents · Residential Sales · Investments · Lettings



Real Estates are delighted to offer for sale this well-maintained, bay-fronted three-bedroom family home located on a desirable residential road in Whetstone. The property offers bright and spacious accommodation throughout, featuring an open-plan modern kitchen/living area, a rear reception room with access to a decked patio and lawned garden, and off-street parking. The home also offers potential for extension (subject to planning). Upstairs includes three generously sized bedrooms and a fitted family bathroom.

Conveniently located just 0.4 miles from Totteridge & Whetstone Station and 0.5 miles from Woodside Park Station, this property combines excellent transport links with access to local amenities and nearby countryside and schools making it ideal for families and commuters alike.

Please contact our Totteridge office for further information or to arrange a viewing.



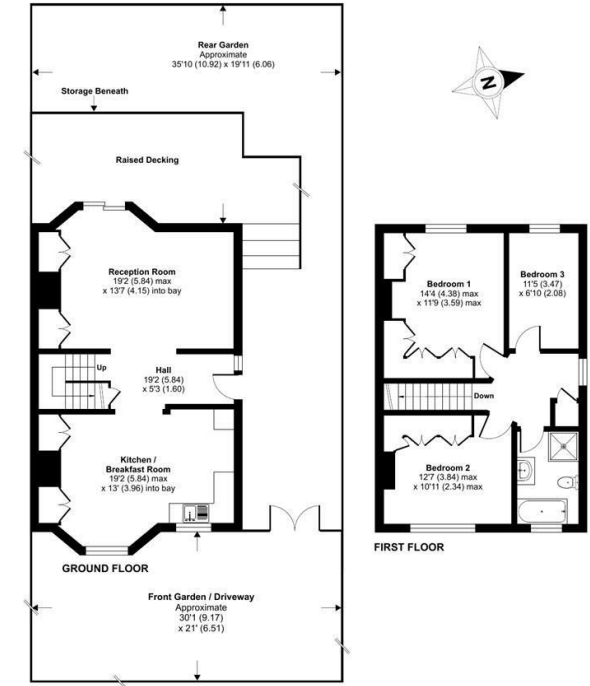






Ridgeview Road, London, N20

Approximate Area = 1129 sq ft / 104.8 sq m  
For identification only - Not to scale



Floor plan produced in accordance with RICS Property Measurement 2nd Edition, incorporating International Property Measurement Standards (IPMS2 Residential). © richcom 2025. Produced for Real Estates. REF: 1302620

Energy Efficiency Rating		
Very energy efficient - lower running costs	Current	Potential
A (91-100)		84
B (81-90)		
C (69-80)		
D (55-68)		46
E (49-54)		
F (45-48)		
G (39-44)		
After energy efficient - higher running costs		
EU Directive		



Real EstatesTottenham Office:  
32 Tottenham Lane  
Tottenham N20 9QJ

II : 0208 445 3132  
e : info@realestates-wsp.co.uk  
w : www.realestates-wsp.co.uk