

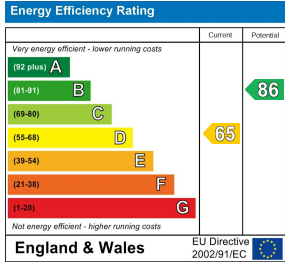
Lynton Mead, Totteridge, N20 8DJ
£3,275 Per Calendar Month Council Tax Band F

REAL ESTATES
Est.1981

Estate Agents · Residential Sales · Investments · Lettings

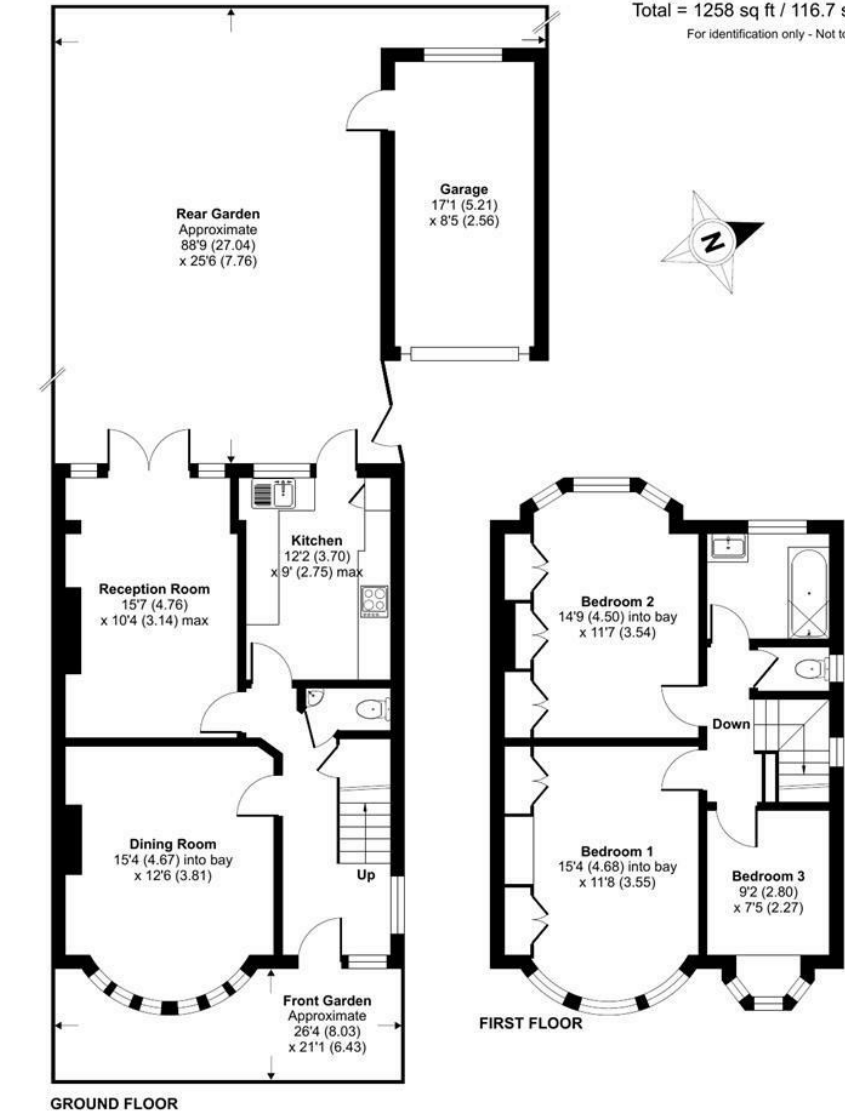
AVAILABLE NOW * FURNISHED/UNFURNISHED * A 3 bedroom semi-detached property in this popular location within easy reach of Totteridge & Whetstone Northern Line tube station and Whetstone High Road's multiple shops and selection of restaurants. Enjoy a spacious garden, perfect for family gatherings or relaxation, and a convenient driveway, garage and off-street parking. Nearby green spaces such as Darlands Nature Reserve and Whetstone Stray.

* GAS CENTRAL HEATING * DOUBLE GLAZING * BURGLAR ALARM * 3 BEDROOMS * 2 RECEPTIONS * GUEST CLOAKROOM * FITTED KITCHEN WITH DISHWASHER AND WASHING MACHINE * GARAGE * WELL MAINTAINED REAR GARDEN * AVAILABLE IMMEDIATELY * UNFURNISHED *



Lynton Mead, London, N20

Approximate Area = 1115 sq ft / 103.5 sq m
Garage = 143 sq ft / 13.2 sq m
Total = 1258 sq ft / 116.7 sq m
For identification only - Not to scale



Floor plan produced in accordance with RICS Property Measurement 2nd Edition, Incorporating International Property Measurement Standards (IPMS2 Residential). © richcom 2025. Produced for Real Estates. REF: 1331933