



Woodside Avenue, Woodside Park, N12 8LS
£2,050 Per Calendar Month Council Tax Band F

REAL ESTATES
Est.1981

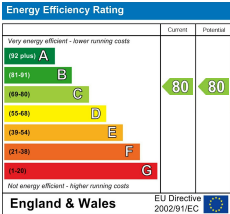
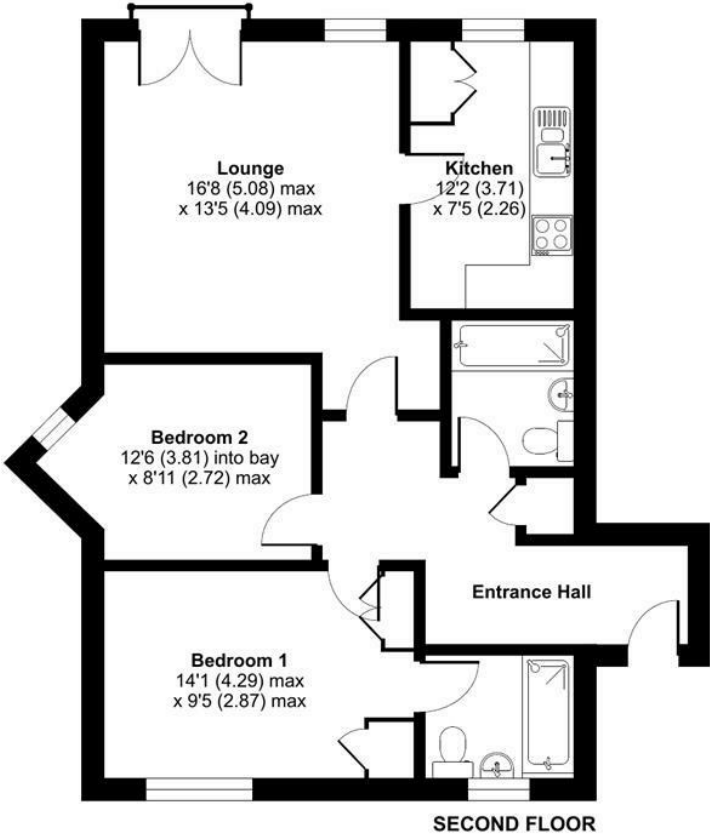
Estate Agents · Residential Sales · Investments · Lettings

AVAILABLE UNFURNISHED FROM 1ST OCT * A 2 BEDROOM 2 BATHROOM 1ST floor flat with the benefit of ALLOCATED PARKING SPACE, COMMUNAL GARDENS AND LIFT IN BLOCK.

Situated within easy reach of Woodside Park NORTHERN LINE tube station and local shops.

Woodside Avenue, London, N12

Approximate Area = 743 sq ft / 69 sq m
For identification only - Not to scale



Floor plan produced in accordance with RICS Property Measurement 2nd Edition, Incorporating International Property Measurement Standards (IPMS2 Residential). © richcom 2025. Produced for Real Estates. REF: 1346016